

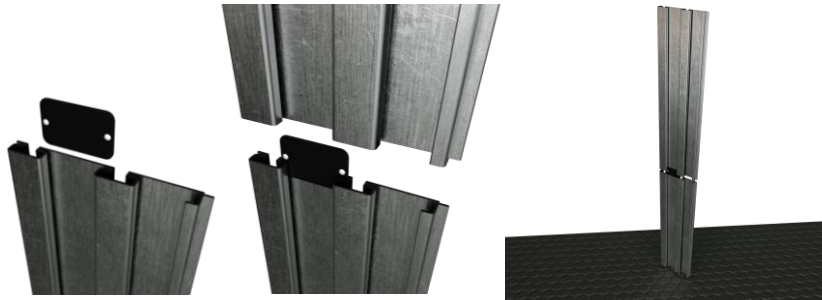


1-866-443-6623
www.holdupdisplays.com

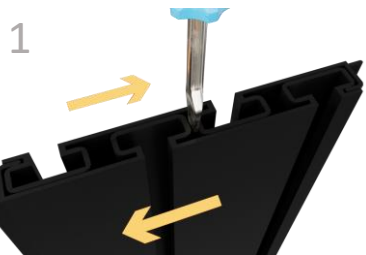
24" Slatwall Rail



***Note:** The connector plates are **ONLY** needed if joining rail end-to-end to mount two walls side by side.



Insert connector plate into back of slatwall. Press rails together. Grasping the top rail, tap rails on a rug or a non-marring surface to close gap.



If you purchased multiple rails, they will be nested back-to-back for safe shipping. Be sure to separate before assembling. (It may be necessary to use a screwdriver to separate rails)



Choose a location and height for your rack taking into consideration clearance required to add and remove guns from racks. Begin installation with the lowest row of rails.

3



Hold rail against wall with the stacking tab down as shown above. Check level and draw a line along the top of the rail.

4



Using your preferred method, locate and mark every stud along the line. (Minimum of 2) **NOTE:** Studs must be within 7" of the end of the rail. When joining rails end to end, if a stud aligns with joint of the two rails, move display 1" left or right.

5



If stacking multiple rails: Extend lines vertically to the full height of the display and recheck stud alignment. Transfer stud marks to channel.

6



Insert mounting screw into screw guide.

7



The mounting screws included are self-drilling. The screw itself will drill the hole it requires.

8



Place screw guide into channel at stud location. Firmly press both guide and drill against rail and drive screw through channel into stud.

9



Check level and drive screws at each stud location (minimum of 2) in both the top and bottom channels.

10 Optional, sold separately



Remove paper backing from adhesive strip and apply to end cap. Remove red backing.



Apply end caps to both edges of rail.

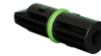
Components:	SKU:	Description:	Quantity:
-------------	------	--------------	-----------



SW22-B

24" Slatwall Panel

Optional, sold separately			
	SW2EC-B	End Cap	2/ Rail



SCREW-GUIDE

Screw Guide Kit

1



8X2"selfdrillingscrew

Mounting Screw

8/Rail



adhesive1/4x4"

Adhesive Strip

1/Endcap



connectorplate

Connector Plate

1/ Rail