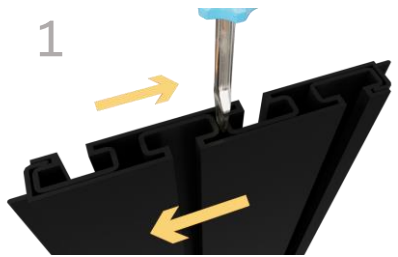


HOLDUP DISPLAYS

1-866-443-6623
www.holdupdisplays.com

HDSW2-2.5X4-GF Green Flag Wall



Rails will be nested back-to-back for safe shipping. Be sure to separate before assembling. (It may be necessary to use a screwdriver to separate rails)



Choose a location and height for your rack taking into consideration clearance required to add and remove firearms from racks. Begin Installation with the lowest row of rails.



Hold rail against wall with the stacking tab down as shown above. Check level and draw a line along the top of the rail.



Using your preferred method, locate and mark every stud along the line. **NOTE: Studs must be within 7" of the end of the rail. When joining rails end to end if a stud aligns with joint of the two rails, move display 1" left or right.**



Extend lines vertically to the full height of the 30" display and recheck stud alignment.



Insert mounting screw into screw guide.



The mounting screws included are self-drilling. The screw itself will drill the hole it requires.



Place screw guide into channel at stud location. Firmly press both guide and drill against rail and drive screw through channel into stud.



Check level and drive screws at each stud location in both the top and bottom channels.



Mark and attach with screws each additional row to complete wall.



Flagprintwall-green

Olive Drab Flag Panel

1



HD42

Screw Guide Kit

1



8X2"selfdrillingscrew

Mounting Screw

40



connectorplate

Connector Plate

5

***Note:** The connector plate is **ONLY** needed if joining rail end-to-end to connect to an existing gun wall.



Insert connector plate into back of slotwall. Press rails together.