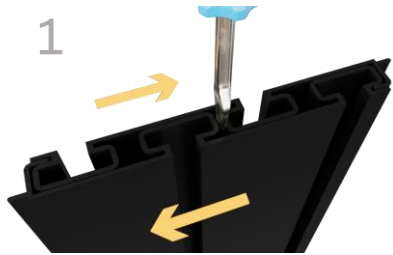




1-866-443-6623
www.holdupdisplays.com

**HD93-GF
American Flag Gun Wall
Bundle – Green**

1



Rails will be nested back-to-back for safe shipping. Be sure to separate before assembling. (It may be necessary to use a screwdriver to separate rails)

2



Choose a location and height for your rack taking into consideration clearance required to add and remove firearms from racks. Begin installation with the lowest row of rails.

3



Hold rail against wall with the stacking tab down as shown above. Check level and draw a line along the top of the rail.

4



Using your preferred method, locate and mark every stud along the line. **NOTE: Studs must be within 7" of the end of the rail. When joining rails end to end if a stud aligns with joint of the two rails, move display 1" left or right.**

5



Mark lines vertically to the full height of the 30" display and recheck stud alignment.

6



Insert mounting screw into screw guide.

7



The mounting screws included are self-drilling. The screw itself will drill the hole it requires.

8



Place screw guide into channel at stud location. Firmly press both guide and drill towards rail and drive screw through channel into stud.

9



Check level and drive screws at each stud location in both the top and bottom channels.

10



Mark and attach with screws each additional row to complete wall.

11



Tilt fixtures to insert into slatwall channel.

12



Tilt and hook slatwall clip into the channel on the left side of the hanger.

13


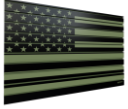








Slide slatwall clip to the right.

***Note:** The connector plate is **ONLY** needed if joining rail end-to-end to connect to an existing gun wall.



Insert connector plate into back of slatwall. Press rails together.

What's in the box:	SKU:	Description:	Quantity:
	HD09-3SW	Pistol Holder	6
	HDSW2-2.5X4-GF	Olive Drab Flag Wall	1
	HD53-3SW	Vertical 6 Rifle Rack	1
	HD75-SW	Heavy Duty Shelf	1
	HD46	Slatwall Clip	10
	HD42	Screw Guide Kit	1
	8X2"selfdrillingscrew	Mounting Screw	40
	connectorplate	Connector Plate	5