



1-866-443-6623  
www.holdupdisplays.com

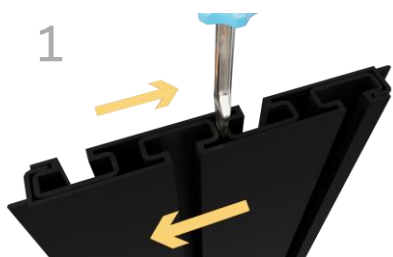
### HD113 Gun Wall Bundle



5 Extend lines vertically to the full height of the 36" display and recheck stud alignment.



6 Insert mounting screw into screw guide.



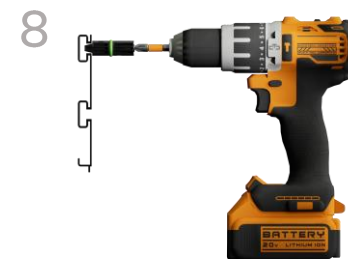
1 Rails will be nested back-to-back for safe shipping. Be sure to separate before assembling. (It may be necessary to use a screwdriver to separate rails)



2 Choose a location and height for your rack taking into consideration clearance required to add and remove firearms from racks. Begin installation with the lowest row of rails.



7 The mounting screws included are self-drilling. The screw itself will drill the hole it requires.



8 Place screw guide into channel at stud location. Firmly press both guide and drill towards rail and drive screw through channel into stud.



3 Hold rail against wall with the stacking tab down as shown above. Check level and draw a line along the top of the rail.



4 Using your preferred method, locate and mark every stud along the line.  
**NOTE: Studs must be within 7" of the end of the rail. When joining rails end to end if a stud aligns with joint of the two rails, move display 1" left or right.**

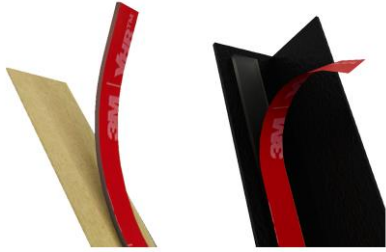


9 Check level and drive screws at each stud location in both the top and bottom channels.



10 Mark and attach with screws each additional row to complete wall.

11



Remove paper backing from adhesive strip and apply to end cap. Remove red backing.

12



Apply end caps to both edges of wall .

13



Tilt fixtures to insert into slatwall channel.

14



Tilt and hook slatwall safety clip into bottom track of the channel on the left side of the hanger. Slide slatwall clip to the right.

**\*Note:** The connector plate is **ONLY** needed if joining rail end-to-end to connect to an existing gun wall.



Insert connector plate into back of slatwall. Press rails together.

Components:

SKU:

Description:

Quantity:



HD09-3SW

Pistol Holder

2



HDSW24-B

48" Slatwall Panels

6



HD53-3SW

Vertical 6 Rifle Rack

1



HD75XL-SW

Heavy Duty Shelf

1



HDSW2EC-B36.25

End Cap

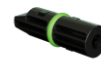
2



HD46

Slatwall Clip

4



HD42

Screw Guide Kit

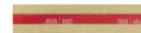
1



8X2"selfdrillingscrew

Mounting Screw

48



adhesive1/4x4"

Adhesive Strip

6



connectorplate

Connector Plate

6



HD04-3SW

Gun/Bow Holder

1