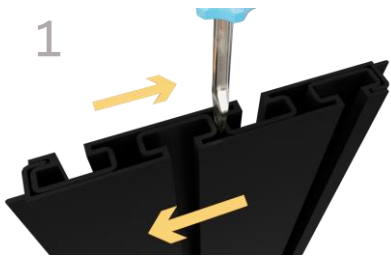




1-866-443-6623  
www.holdupdisplays.com

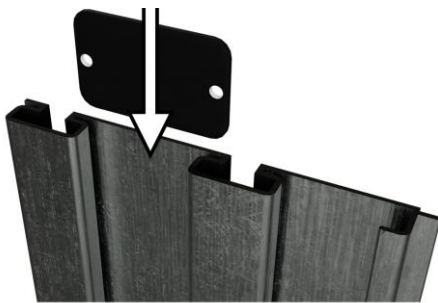
### HD108-B Slatwall Bundle

1



Rails will be nested back-to-back for safe shipping. Be sure to separate before assembling. (It may be necessary to use a screwdriver to separate rails)

3



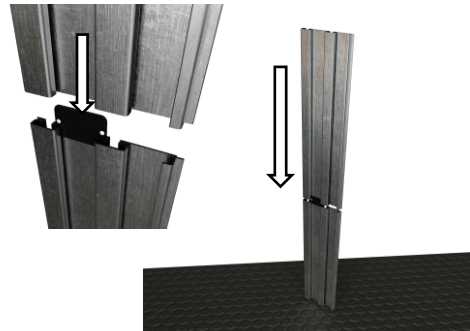
Insert connector plate into back of slatwall.

2



Choose a location and height for your rack taking into consideration clearance required to add and remove firearms from racks. Begin installation with the lowest row of rails.

4



Press rails together. Grasping the top rail, tap rails on a rug or a non-marring surface to close gap.

5



Hold rail against wall with the stacking tab down as shown above. Check level and draw a line along the top of the rail.

7



Extend lines vertically to the full height of the display and recheck stud alignment.

9



The mounting screws included are self-drilling. The screw itself will drill the hole it requires.

6



Using your preferred method, locate and mark every stud along the line.

**NOTE: Studs must be within 7" of the end of the rail. When joining rails end to end if a stud aligns with joint of the two rails, move display 1" left or right.**

8



Insert mounting screw into screw guide

10



Place screw guide into channel at stud location. Firmly press both guide and drill against rail and drive screw through rail into stud.

Note: Mount screws into studs within 10" of end of rail on each side

11



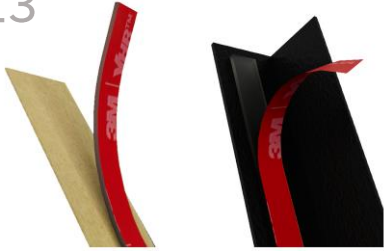
Check level and drive screws at each stud location in both the top and bottom channels.

12



Mark and attach with screws the additional row to complete wall.

13



Remove paper backing from adhesive strip and apply to end cap. Remove red backing.

14



Apply end caps to both edges of wall .

15



Tilt fixtures to insert into channel.

Components:

SKU:

Description:

Quantity:



HDSW2EC-B

End Cap

8



HDSW24-B

48" Slatwall Panels

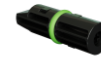
4



HD53-3SW

Vertical 6 Rifle Rack

4



HD42

Screw Guide Kit

1



8X2"selfdrillingscrew

Mounting Screw

32



adhesive1/4x4"

Adhesive Strip

8



connectorplate

Connector Plate

4



HD46

Slatwall Clip

16