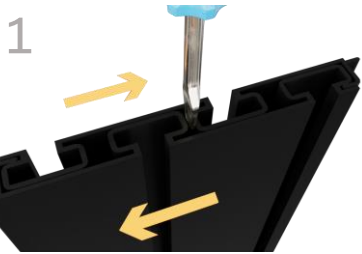


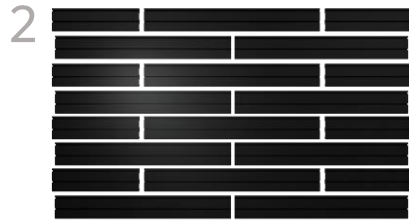


1-866-443-6623
www.holdupdisplays.com

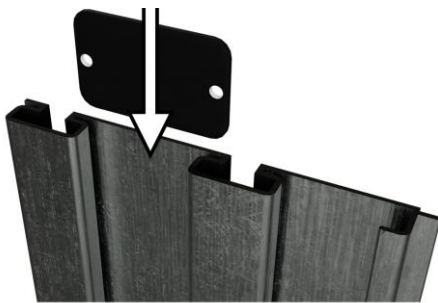
HD107 Tactical Wall Display



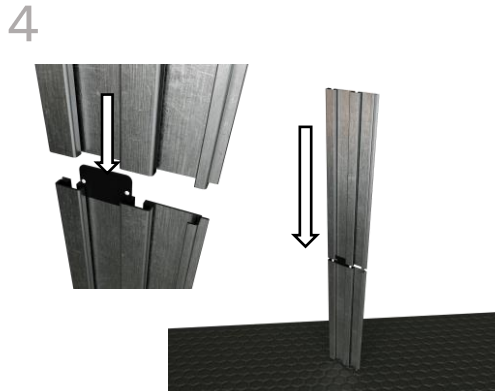
Rails will be nested back-to-back for safe shipping. Be sure to separate before assembling. (It may be necessary to use a screwdriver to separate rails)



Choose a location and height for your rack taking into consideration clearance required to add and remove firearms from racks. Begin installation with the lowest row of rails.



Insert connector plate into back of slatwall.



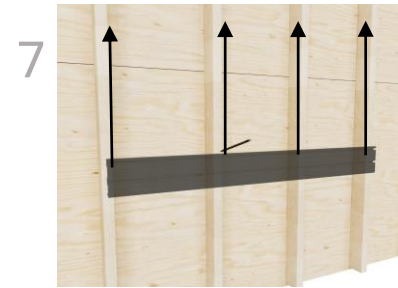
Press rails together. Grasping the top rail, tap rails on a rug or a non-marring surface to close gap.



Hold rail against wall with the stacking tab down as shown above. Check level and draw a line along the top of the rail.



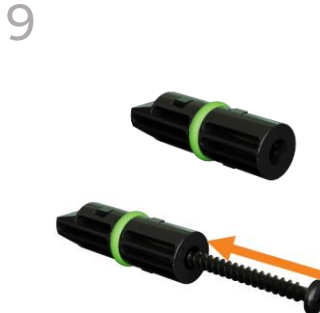
Using your preferred method, locate and mark every stud along the line. **NOTE: Studs must be within 7" of the end of the rail. When joining rails end to end, if a stud aligns with joint of the two rails, move display 1" left or right.**



Mark lines vertically to the full height of the display and recheck stud alignment.



The mounting screws included are self-drilling. The screw itself will drill the hole it requires.



Insert mounting screw into screw guide.



Place screw guide into channel at stud location. Firmly press both guide and drill against rail and drive screw through channel into stud.

11



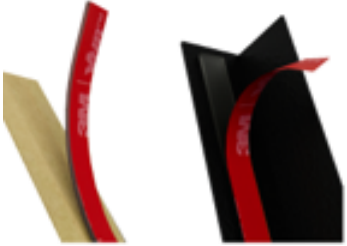
Check level and drive screws at each stud location in both the top and bottom channels.

12



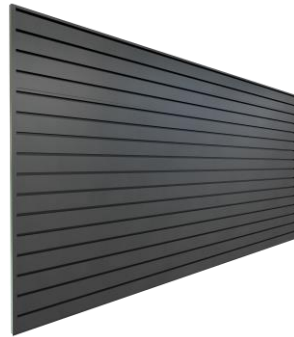
Mark and attach with screws each additional row to complete wall.

13



Remove paper backing from adhesive strip and apply to end cap. Remove red backing.

14



Apply end caps to both edges of wall.

15



Tilt fixtures to insert into slatwall channel.

16



Tilt and hook slatwall clip into channel on the left side of the hanger. Slide slatwall clip to the right.

Components:

SKU:

Description:

Quantity



adhesive1/4x4"

Adhesive Strip

8



HDSW24-B

48" Slatwall Panels

12



HDSW22-B

24" Slatwall Panels

8



HD75-SW

Heavy Duty Shelf

2



HD53-3SW

Vertical 6 Rifle Rack

2



connectorplate

Connector Plate

12



HD46

Slatwall Clip

12



HD09-3SW

Pistol Holder

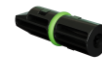
12



HDSW2EC-B48.25

End Cap

2



screwguide

Screw Guide

1



8X2"selfdrillingscrew

Mounting Screw

138



HD04-3SW

Gun/Bow Holder

2



HD94-3SW

Magazine Holder

6